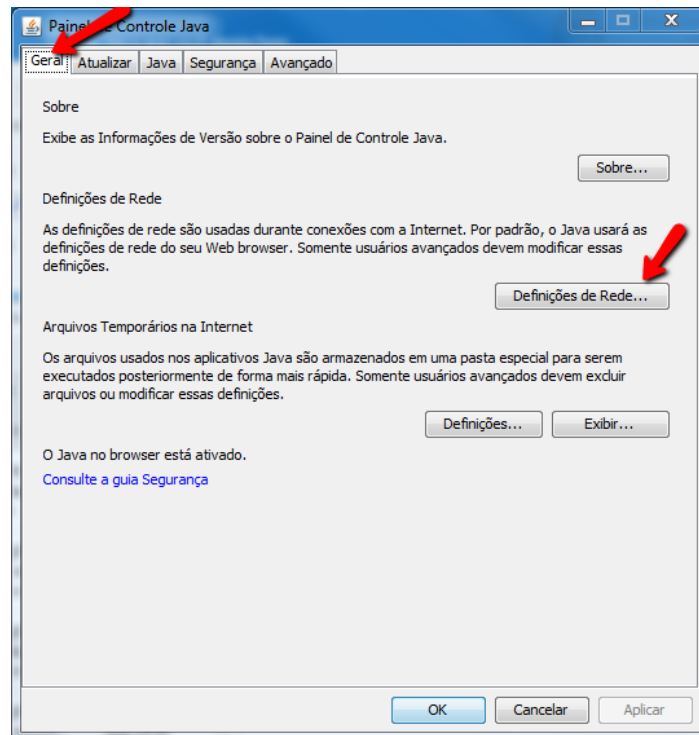
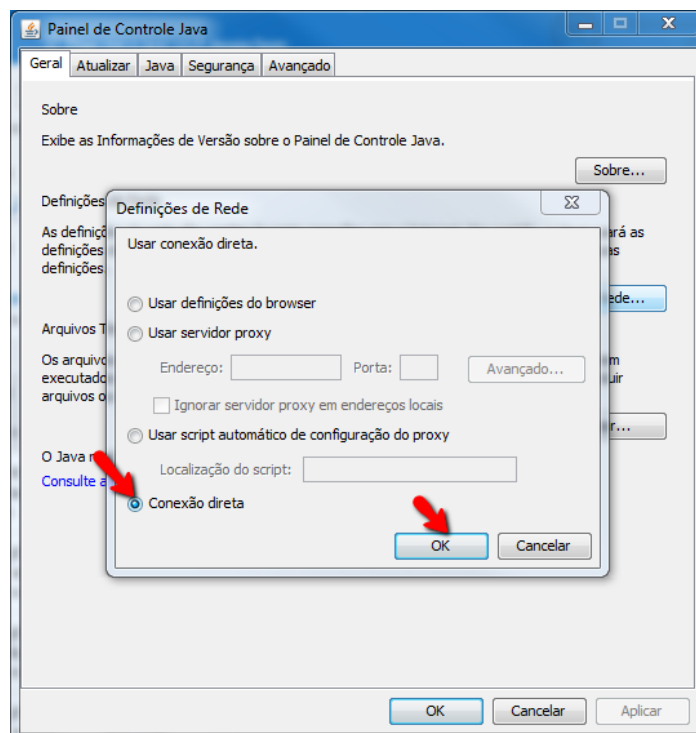


# ERRO DE JAVA NO CONECTIVIDADE SOCIAL ICP

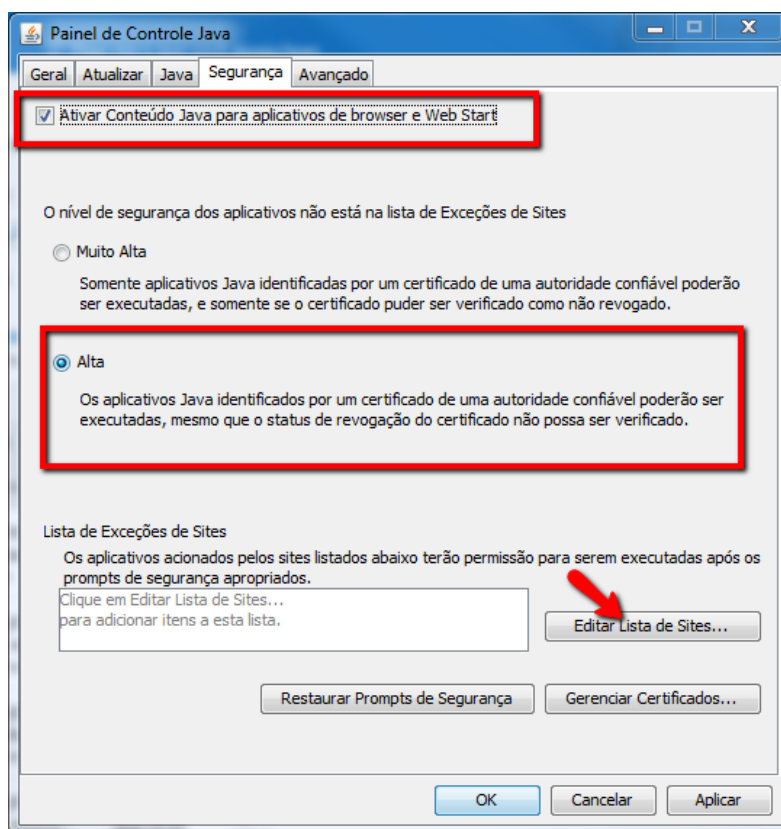
No iniciar o window digite **Configurar Java** e clique  
Na aba **Geral** clique em **Definições de Rede**



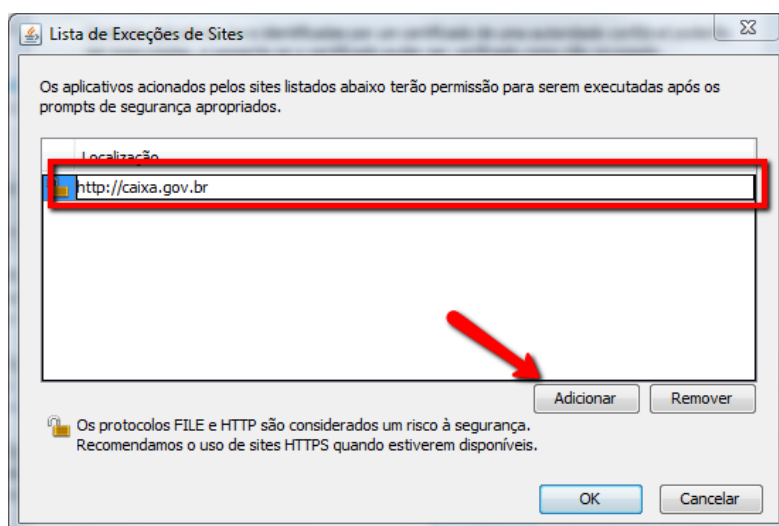
Selecione **Conexão direta**>ok



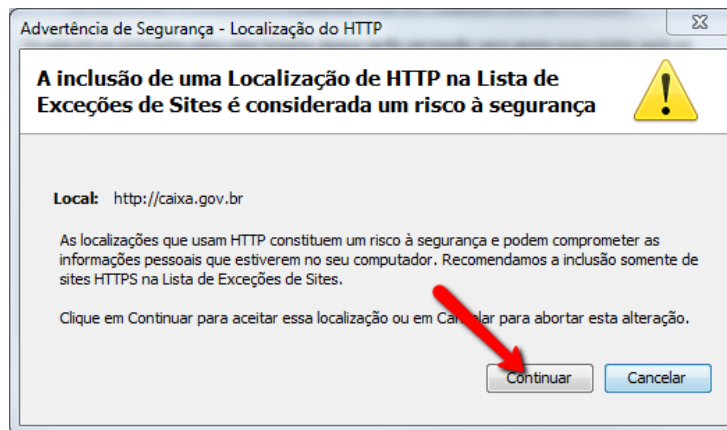
Clique na aba **Segurança** > **Editar Lista de Sites...**



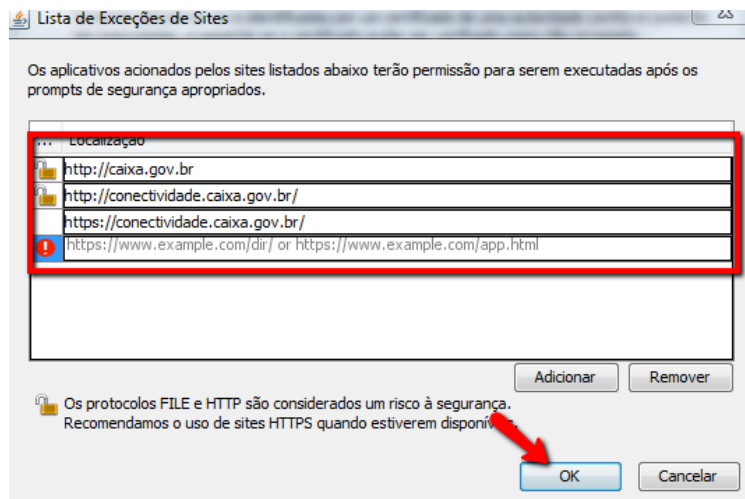
Digite <http://caixa.gov.br> > **Adicionar**



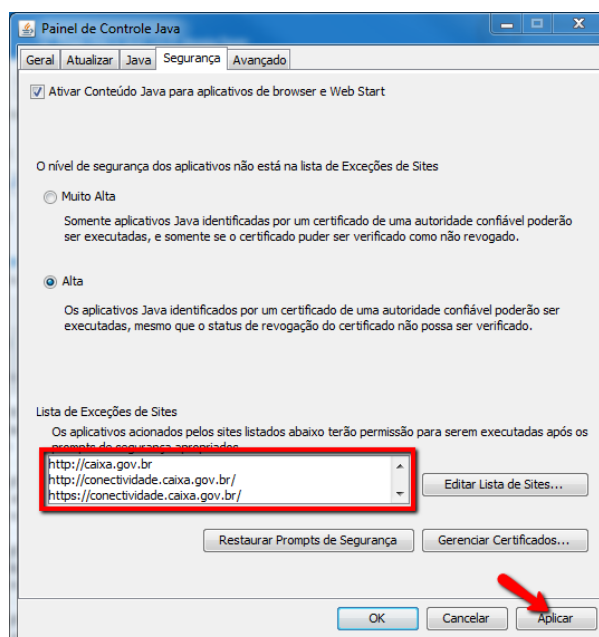
## Clique em Continuar



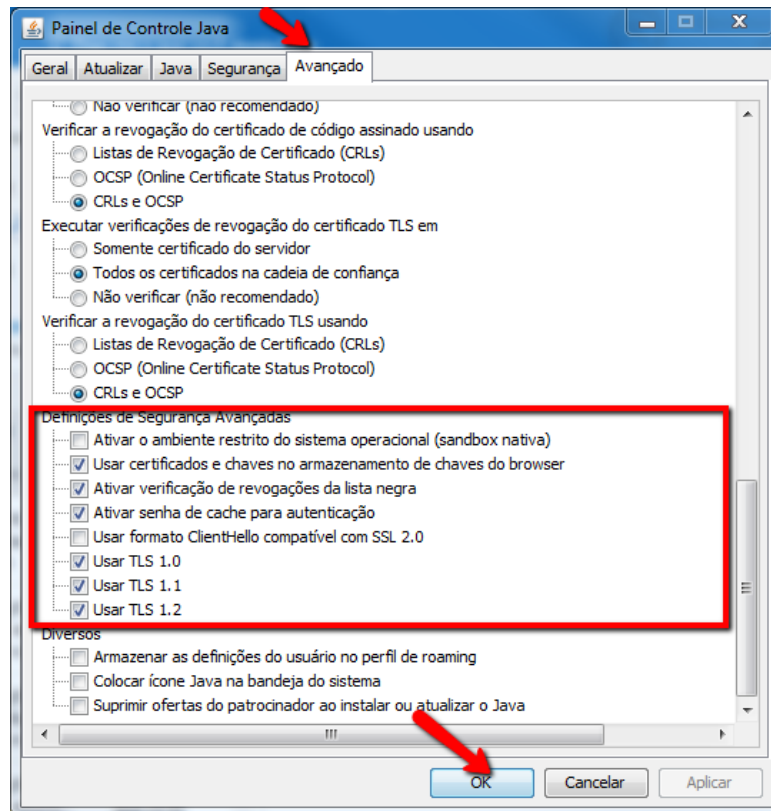
Repetir o processo acima para os endereços <http://conectividade.caixa.gov.br> e <https://conectividade.caixa.gov.br>



## Clique em Aplicar



Na aba **Avançado** no final verifique se as opções abaixo estão selecionadas conforme a tela abaixo > **OK**



Feche o navegador e abra novamente acessando o site da caixa.